




DS900, Diver-held imaging SONAR

for affordable, safe and informed diving tasks

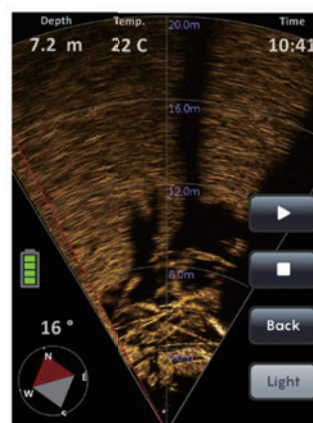
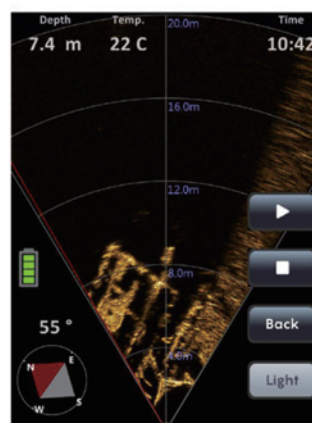
Affordable and powerful diver SONAR

This unique device is one of the most powerful and practical sonar systems in the market for the savvy divers. It is a hand-held underwater acoustic imaging system with depth sensor, temperature sensor, compass, HD camera and underwater light. It also has realtime recording capabilities (for both sonar and camera).

Every diver can make use of this dynamic product to enjoy visibility in dark and turbid environments for their tasks such as search & rescue (SAR), structure monitoring or obstacle avoidance.

Features

- High resolution sonar images under zero visibility
- Diver-held (swim-board type)
- Real time images fed to divers' eyes
- For SAR (search and rescue)
- For Underwater Inspections
- For Military Operations



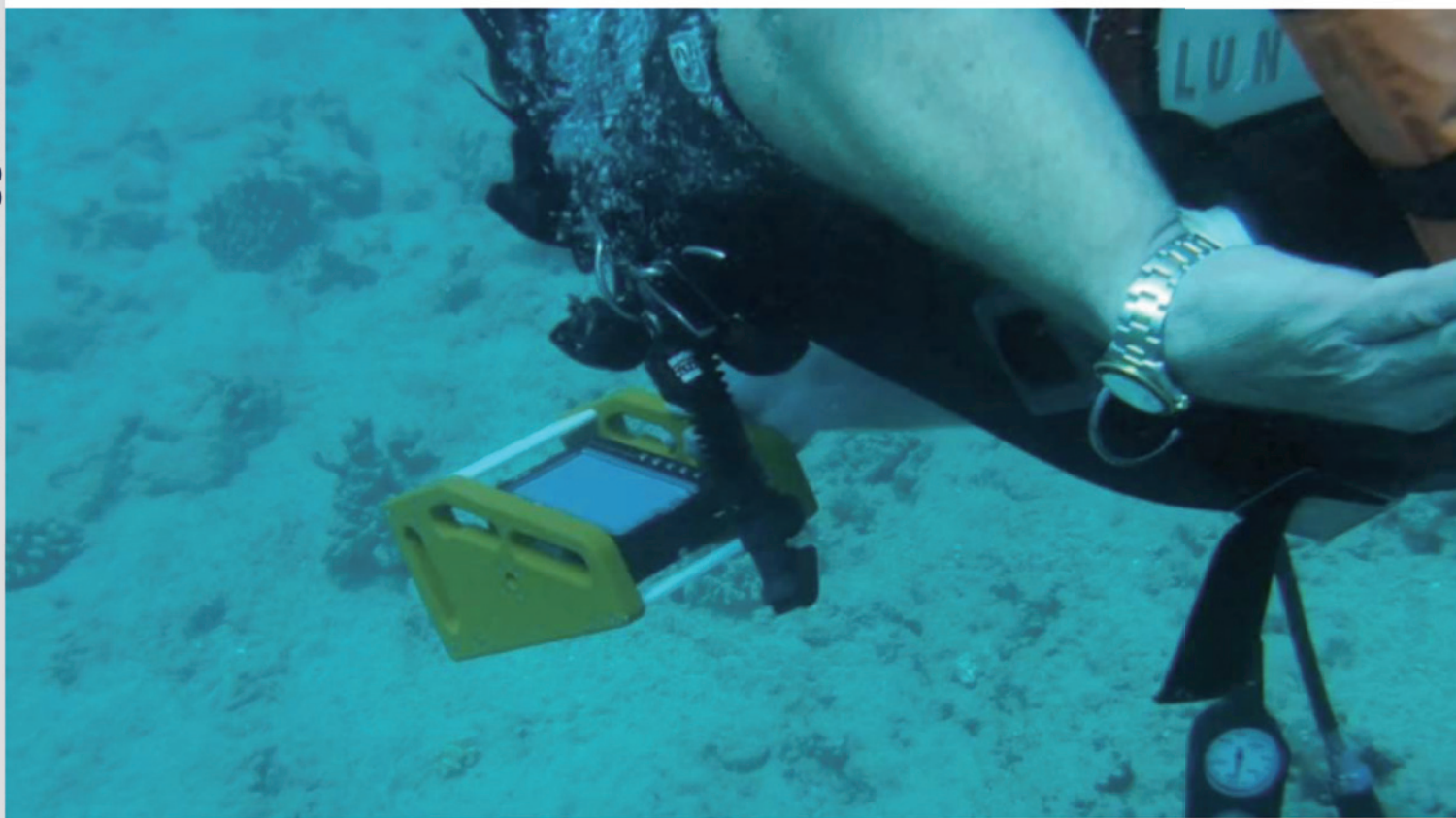
Field certified

Professional bodies have commended the sublime nature of this fascinating device.

"With this unit, that's the fastest I've ever swum the obstacle course"

"We were also able to swim 50 yards offshore, and use the unit to see the pier and swim back to the right spot" - SEAL divers

"It beats most of the conventional diver held devices in value for money" – Rescue diver



Specifications

| | |
|----------------------------------|--|
| Operating frequency | 900 kHz |
| Beam angle | H2°, V25.0° |
| Max Range | 60m |
| Range resolution | 15 mm |
| Scanning resolution (adjustable) | 0.1125°, 0.45°, 1.8° |
| Pulse length | 512 us (CHIRP), 10 - 100us (CW) |
| Scanning angle (adjustable) | 30, 45, 60° |
| Underwater monitor | Color LCD 7inch, 1280 x 800 pixels |
| Battery Life | Appx. 3 hrs @ sonar mode |
| Memory | SSD 15GB (50hours' sonar data) |
| Depth rate | 100 m |
| Control unit housing material | Al (Hard anodized) |
| Weight | 4.3 kg(air) / -36g(water) |
| Dimensions | 230 x 290 x 160 (mm) |
| Pressure sensor | 0~30bar (300m) |
| Pressure sensor resolution | 0.2mbar |
| Underwater Camera | HD 1280 x 720 (max 30 fps) |
| Camera view angle | 73° |
| Light Brightness | 300 lm |
| Compass range | 360° |
| Compass resolution | Heading: 0.5°, Tilt:1°(<30°), 1.5°(<60°) |



EofE Ultrasonics Co., Ltd.

303, Venture Center, Hanggongdaehangro 76
 Goyang-Si 10540, Korea
 Tel : +82-2-3158-3178
 info@echologger.com

