

**CREATE YOUR OWN  
BATHYMETRY WITH THE  
WASSP S3  
MAP IT ALL**



SEE IT ALL

# S3r AN INTEGRATED SOLUTION

The WASSP S3r Solution is a fully integrated kit which includes all the core components required for a Multibeam Survey operation, designed to ensure functionality, ease of use and cost effectiveness, all while achieving accuracies required by international survey standards.



The S3r kit is an integrated option which includes the following components:

COMPONENT	OVERVIEW
Multibeam Echosounder Transducer	WASSP Wideband Fairing Transducer
MBES Processor (DRX)	WASSP IP66 DRX-32
RTK INS Sensor	Position, Heading, Pitch, Roll & Heave
Antenna	Dual Antenna GNSS RTK
SVS Antenna	Sound Velocity
UI	WASSP CDX with RPM
System Wiring Cables	Power, Ethernet, Sensor & Antenna



The WASSP S3r Solution integrates with a range of 3rd party software platforms including:



## THE WASSP S3r PACKAGE SPECIFICATIONS

<b>IP66 DRX-32</b> 	Water resistant IP66 black box processor 9-12VDC 30w/2.5Ah consumption @12VDC Ping Rate upto 100 times per second	Depth range 1-300m IP66 Gland Attachment included Includes Cabling
<b>WIDEBAND FAIRING TRANSDUCER</b> 	Centre Frequency adjustable by kHz from 120-200kHz Chirp Range upto +/- 30kHz WASSP Operation up to 20kn	Optional Fairing block for Hull fitting Cable Optional Plate for Pole fitting Cable Length - 5m/10m/20m
<b>RTK INS</b> 	Ellipse Dual Antenna RTK GNSS / INS 0.05° Roll and Pitch (RTK) 0.2° Heading (Dual Antenna RTK GNSS L1/L2) Heave accuracy – 5cm or 5%	Immune to magnetic distortions 1 cm RTK GNSS Position
<b>SVS</b> 	Range: 1375 - 1900m/s Resolution: 0.001m/s 100mm: Total max theoretical error ±0.017m/s	Voltage: 9 - 28V DC Power: 0.25W (SV) 0.35W (SV+Pressure)
<b>CDX WITH RPM</b> 	Visualisation, Data processing & Control UI Data management Automatic inbuilt Notification system	RPM module can be run standalone with 3rd party software
<b>SURVEY LICENSE</b> 	Includes an uncorrected data format that is required for interfacing to third party software such as HYPACK, BeamworX, QINSY, EVIA and WASSP Data Manager GSF output.	

## PACKAGE OPTIONS

The S3r solution package can be configured with a number of different options depending on your current component and boat configuration. Contact us to discuss a tailored package according to your needs

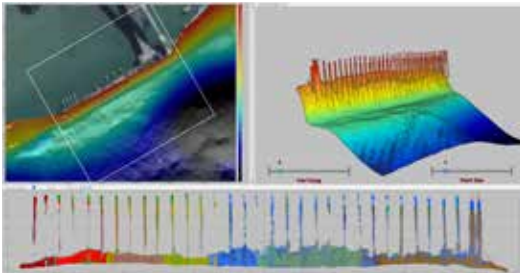


# S3Pr

## THE PORTABLE POLE KIT

The WASSP S3Pr pole kit takes portable surveying to a whole new level. A full kit is combined within 2 rugged cases allowing for easy transportation, but still giving the power and accuracy you would expect from a professional survey system.

Our low-cost adjustable and removable mounting kit is flexible enough to offer a range of mounting options for small boats giving you the flexibility you need when doing on-location mapping or utilising with a vessel of opportunity. Side-mounting or cross-boat mounting, you can do it all with a single pole package for the adaptability you need when surveying.

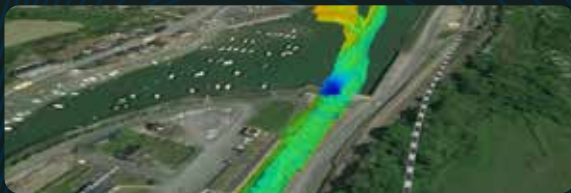


COMPONENT	DETAIL
S3r Kit	DRX-32, Wideband Fairing Transducer, RTK GNSS / INS Receiver, GNSS RTK Antenna, SVS, CDX UI Exterior: 62.9 x 39.3 x 20.9 cm
Anodised Aluminium Pole Tubes	50 x 1.1m (x 7) 50 x 1.0m (x 1) 50 x 0.5m (x 2) 50 x 0.4m (x 1) 50 x 0.3m (x 2)
Pelican 1555 Air Case	Exterior: 62.9 x 39.3 x 20.9 cm
Pelican 1745 Air Case	Exterior: 118.6 x 49.2 x 22.2 cm
Clamps	T Clamp (x 5) Sleeve Clamp (x 2) X Mount Clamp (x 2)
Mounting Plate	For Wideband Fairing Transducer

- IHO COMPLIANCE**
- IHO S-44 Standard 1B
  - IHO S-44 Standard 1A
  - IHO S-44 Special Order

COMMON DEPLOYMENT METHODS	
Gunnel Mount	Over-the -side attachment, utilises single gunnel and clamps
Crossbar Mount	Cross Boat installation, requires using supplied straps underneath boat
Transom Mount	Attachment to transom with supplied clamps and straps

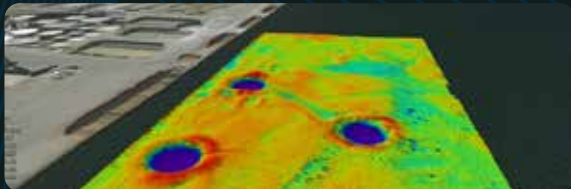
## S3 SURVEY APPLICATIONS



HYDROGRAPHIC



WORKBOAT



CONSTRUCTION



DREDGING

*“During initial trials, the WASSP Multibeam was able to profile ripples on the estuary floor up to 15cm in distance apart.”*

– Kristopher Krasnosky, University of Rhode Island PHD student and researcher

**THE FASTER AND MORE ACCURATE WASSP S3!**

To add WASSP S-Series technology to your survey operations, contact your local dealer or email [sales@wassp.com](mailto:sales@wassp.com)



SEE IT ALL

### ALWAYS GOING BEYOND

WASSP is part of the ENL Group. With more than 75 years' experience, we're world leaders in marine sounder, radar and communications.

Based in the marine nation of New Zealand, which has one of the world's largest marine economic zones, ENL invests heavily in R&D to constantly push the boundaries. We develop software and hardware solutions for seabed surveying and mapping, defence, superyachts, commercial fishing and workboats.

Our passion and commitment to real innovation is what sets us apart. We consistently bring game-changing technology to market, with cost-effective products that are easy to operate to make your life at sea easier.

**UK OFFICE - ENL EUROPE LTD**  
Blackwater Marina, Esplanade  
Maylandsea, Essex, CM36AL, UK  
+44 1621 983 125

**AUCKLAND HEAD OFFICE**  
46 Hillside Rd, Wairau Valley  
Auckland, New Zealand  
+64 9 373 5595

**AUCKLAND SHOWROOM**  
23 Westhaven Drive  
Auckland, New Zealand  
+64 9 980 0291

**NELSON OFFICE/SHOWROOM**  
78 Vickerman St, Port Nelson  
Nelson, New Zealand  
+64 3 548 4987

[SALES@WASSP.COM](mailto:SALES@WASSP.COM) | [WASSP.COM](http://WASSP.COM)



A FURUNO COMPANY