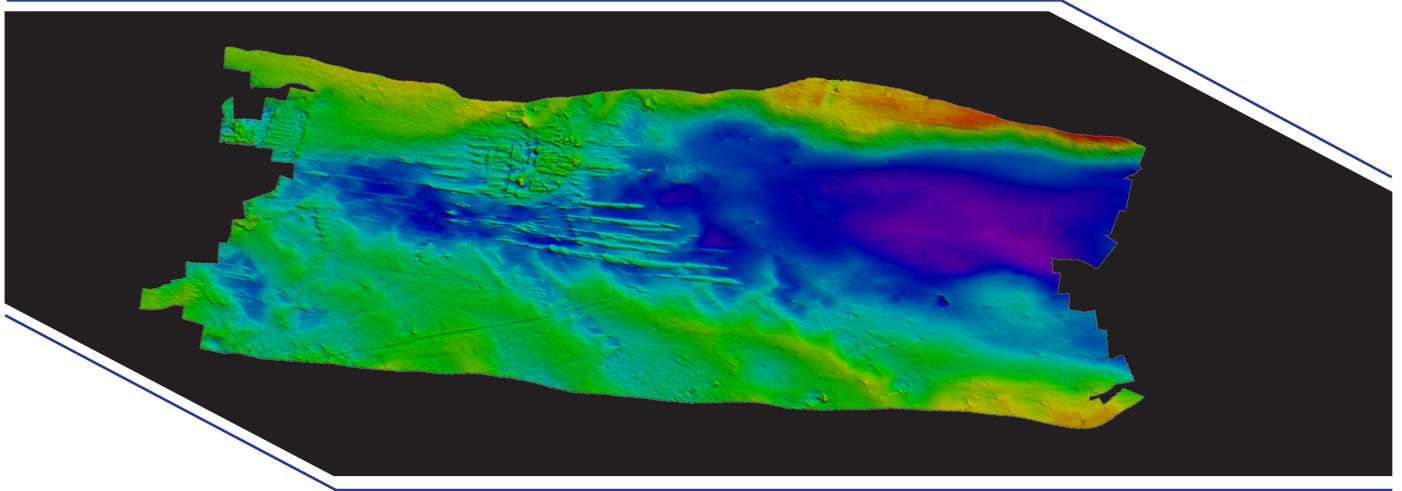


# M7 Integrated Multibeam Sonar



M7 is a highly-versatile, high-resolution multibeam echo sounder, which is also extremely simple to use and to install on the vehicle. The tightly coupled GNSS INS makes it easy to integrate even on ultra-small vehicles and very quick to mobilize. Its hydrodynamic form factor and its low power consumption makes it the perfect choice for small autonomous surface vehicles, data acquisition included.

Ponds and Lakes	★★★★★	University Research	★★★★★
Harbors/Construction	★★★★★	Dredging	★★★★★
Coastal Waters	★★★★★	Archeology	★★★★★
Small Survey Boats	★★★★★	Autonomous Surface Vehicles	★★★★★
Large Survey Boats	★★★★	Small Survey Companies	★★★★★



## Specifications:

<b>Swath coverage</b>	Up to 130 degrees
<b>Number of RX beams</b>	512
<b>TX beam width along-track</b>	1.45°
<b>RX beam width</b>	1° ±0.1
<b>Range</b>	>200m
<b>Range accuracy</b>	<10mm
<b>Beam distribution</b>	Equi-Distant and equi-angular beam distribution
<b>Roll stabilisation</b>	Yes
<b>Pressure rating</b>	60m
<b>GNSS/INS</b>	INS in Sonar
<b>Position</b>	HOR: ±(8mm +1ppm X Distance from RTK Station) VER: ±(15mm +1ppm X Distance from RTK Station) (Assumes 1m GNSS Separation)
<b>Heading Accuracy</b>	0.08° (RTK) with 2m Antenna Separation
<b>Pitch/Roll Accuracy</b>	0.03° Independent of Antenna Separation
<b>Heave Accuracy</b>	2cm or 2% (TRUEHEAVE™). 5cm or 5% (Real Time)
<b>Ping Rate</b>	50 Hz
<b>Outputs</b>	Bathymetry, Side Scan
<b>Compatible with</b>	Qinsy, Hypack, BeamworX, SonarWiz a.o
<b>Weight w. bracket</b>	Air: 3.5 kg, Water: 1.2 kg



data acquisition included

